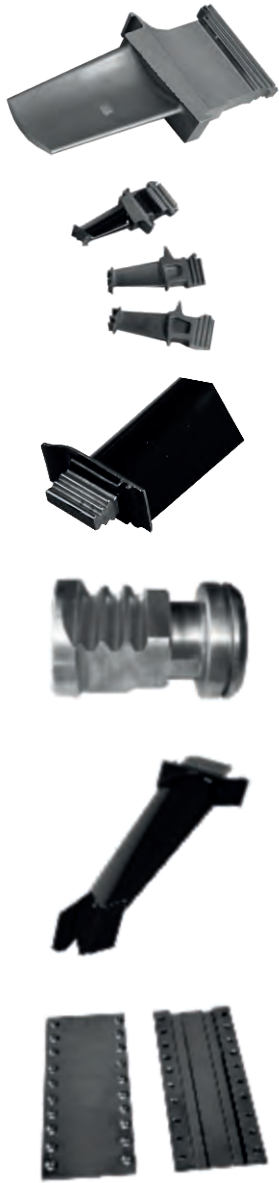


800 SERIES

CREEP FEED GRINDING MACHINES

The Model 800 creep feed grinder's configuration is optimized for creep-feed grinding processes that require three linear axes. Specifically, it is a traveling column design with a Y axis ram traveling on the Z axis, and a stationary work-piece. This configuration allows for a small machine footprint while allowing all three structural guideway rail mating components to have a large closed-box cross section, maximizing grinding stiffness and geometric accuracy. This configuration allows for easy implementation of common creep feed grinder options such as continuous-dress creep-feed (CDCF) grinding and indexing table part loading.



SPECIFICATIONS



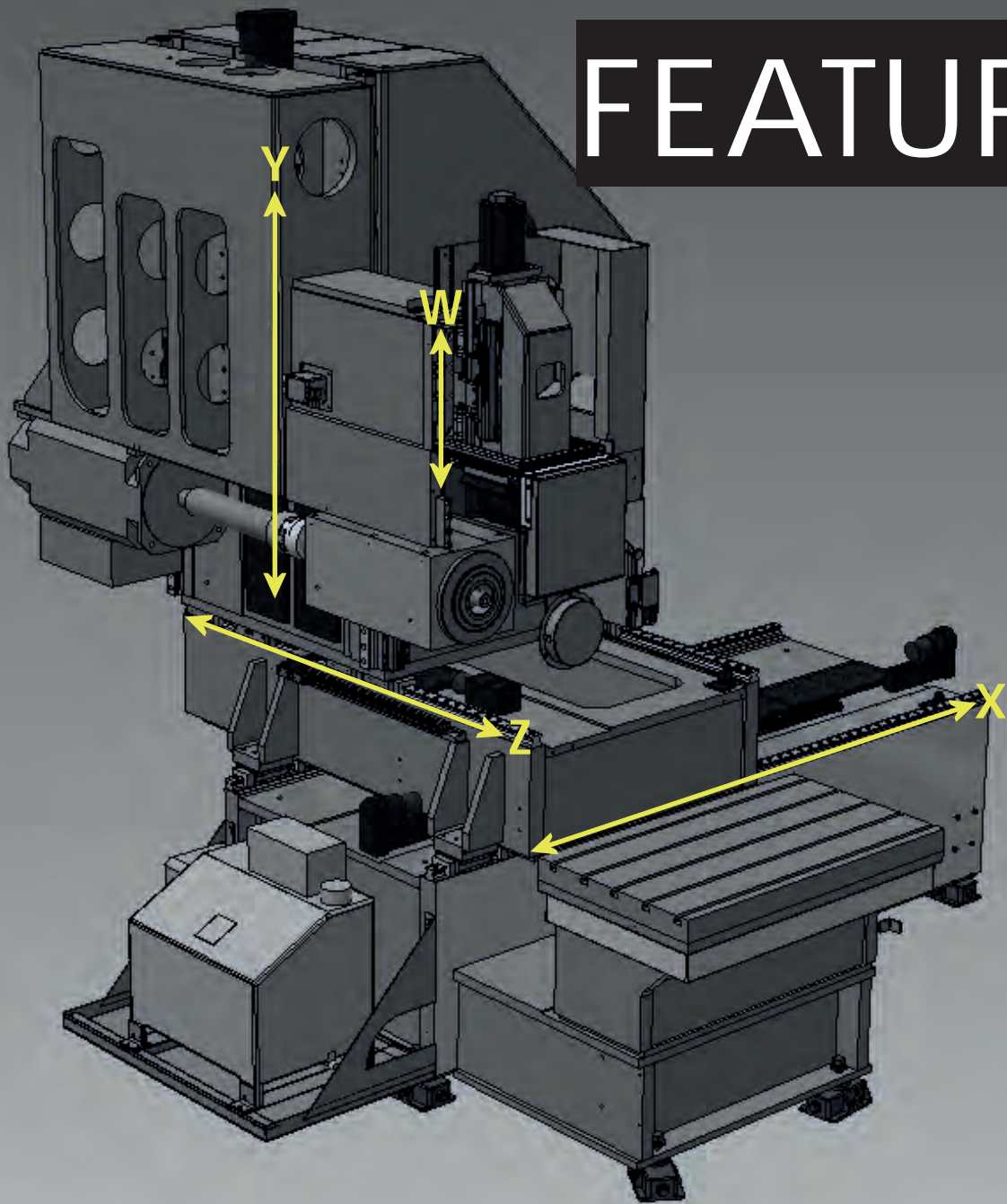
Version	800 A400	800 A600	800 A1000
Table Size	400 x 300 mm	600 x 400 mm	1000 x 600 mm
Part Height	400 mm	600 mm	600 mm
Axis	X, Y, Z	X, Y, Z	X, Y, Z
Spindle	Up to 60 HP	Up to 60 HP	Up to 100 HP

X Axis Accuracy: 5 Microns (0.0002")

Y Axis Accuracy: 5 Microns (0.0002")

Z Axis Accuracy: 5 Microns (0.0002")

FEATURES



STANDARD

Linear Motor Drives - X, Y, Z
Axes

Fanuc CNC Control

Precision Roller Ways – All Axes

Ability to Use Any Abrasive

Direct Motorized Liquid
Cooled Grinding Spindle

Direct Feedback – All Axes

Full Machine Enclosure

Traveling Column

Large Box Section Frame For
Extreme Stiffness And Superior
Machine Geometry

Through-the-Table Hydraulics

OPTIONS

Spindle power up to 100 HP
and various RPM options

Disk dresser

Roll form dresser

Wheel balance system

Fire suppression system (for oil
coolant)

Part probing

Tool probing

Milling and drilling

Gap eliminator

Tool changer

Mist collector

Product Catalog

Campbell Grinder Company



 **Campbell**

1226 E Pontaluna Rd
Spring Lake, MI 49456
(231) 798-6464
CampbellGrinder.com
cgc.sales@campbellgrinder.com